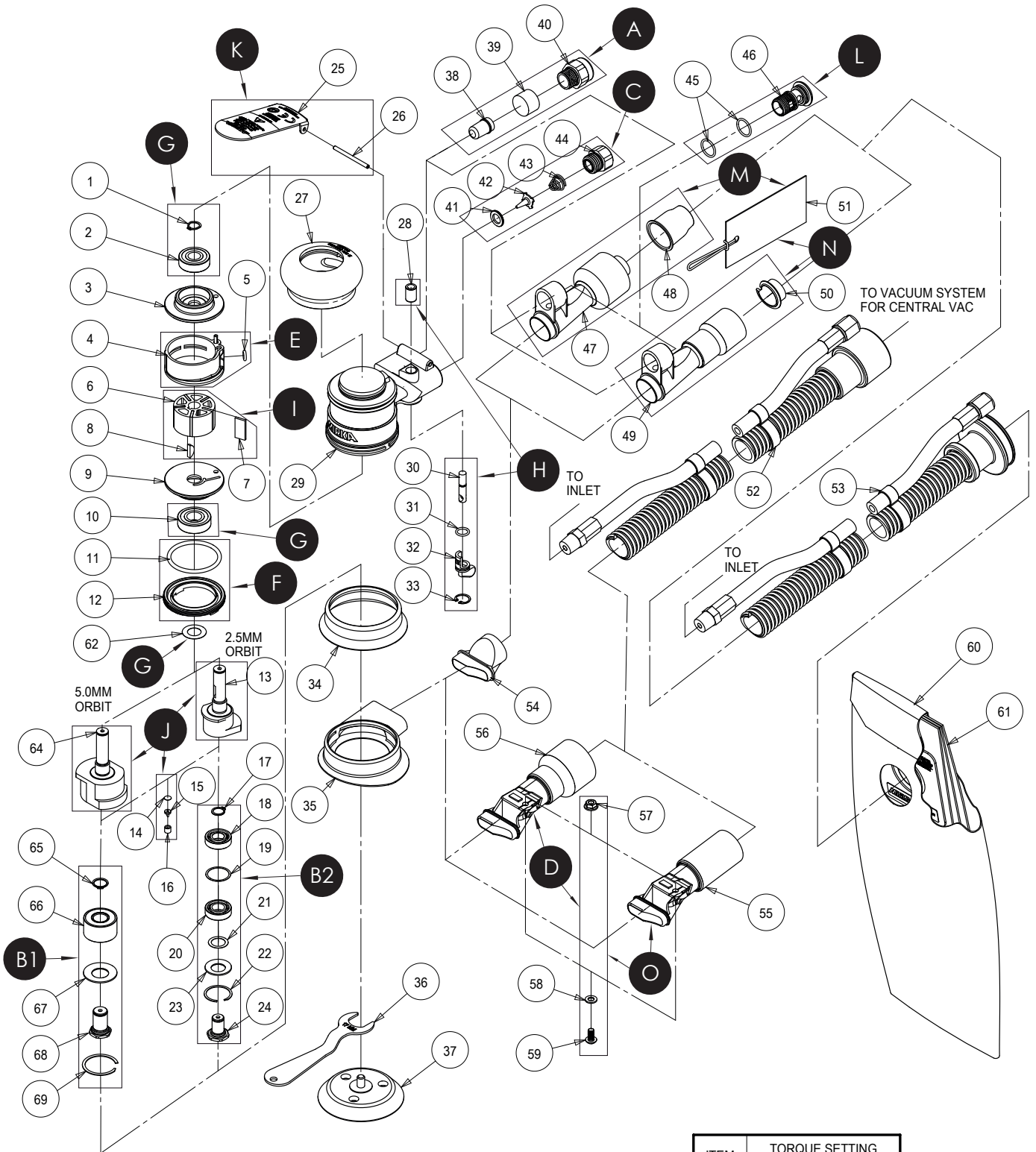


# Exploded view of ROS 325 & 350, 77 mm

Updated 14.03.2022



ITEM	TORQUE SETTING Nm (in.-lbs.)
12	6.2 - 7.3 (55 - 65)
40	1.8 - 2.3 (16 - 20)
44	6.8 - 8.1 (60 - 72)
46	4.0 - 5.4 (36 - 48)
59	3.4 - 3.9 (30 - 35)

## ROS 325 & 350 - 77 mm Spare Part kits

**Note!** Repairs done by non-authorized repairer will breach the Mirka warranty.

Mirka Code	Item	Description	Kit	QTY	Part No	
<b>8993017311</b>		<b>Muffler kit 12000 rpm</b>			MPA0797	
	38	Internal Muffler	<b>A</b>	1	MPA0062	
	39	Muffler Insert		1	MPA0068	
	40	Muffler Housing		1	MPA0166	
<b>MIE3521411</b>		<b>Spindle Bearing kit - Orbit 5.0 mm - (ROS 350)</b>				
	65	Retaining Ring	<b>B1</b>	1		
	66	Bearing		1		
	67	Belleville Washer		1		
	68	Spindle - Orbit 5.0 mm - (ROS 350)		1		
	69	Retaining Ring		1		
<b>MIE3521311</b>		<b>Spindle Bearing kit - Orbit 2.5 mm - (ROS 325)</b>				
	17	Retaining Ring	<b>B2</b>	1		
	18	Bearing		1		
	19	Spacer		1		
	20	Bearing		1		
	21	Washer		1		
	22	Dual Seal		1		
	23	Retaining Ring		1		
	24	Spindle - Orbit 2.5 mm - (ROS 325)		1		
	<b>8993018811</b>			<b>Air Inlet kit</b>		
41		Valve Seat		<b>C</b>	1	MPA0009
42		Valve	1		MPA0007	
43		Valve Spring	1		MPA0014	
44		Inlet Bushing assembly (1/4-18 Npt)	1		MPA0013	
<b>8993006611</b>		<b>Swivel Fitting kit CV 28 mm (Standard for CV)</b>				MPA0988
	56	Swivel Exhaust 28 mm (1 In.) (Standard For CV)	<b>D</b>	1	MPA0099	
	57	Nut M5x0.8		1	MPA0048	
	58	Washer M5		1	MPA0047	
	59	Screw M5x10		1	MPA0769	
<b>8993009211</b>		<b>Cylinder and O-Ring kit</b>				MPA0994
	4	Cylinder assembly	<b>E</b>	1	MPA0005	
	5	O-Ring 5 x 2 mm		1	MPA0042	
<b>8993007911</b>		<b>Lock Ring and O-Ring kit</b>				MPA0993
	11	O-Ring 39.4 x 3.1 mm	<b>F</b>	1	MPA0045	
	12	Lock Ring		1	MPA0001	
<b>8993019811</b>		<b>Endplate Bearing kit</b>				MPA0799
	1	Retaining Ring	<b>G</b>	1	MPA0040	
	2	Bearing		1	MPA0021	
	10	Bearing		1	MPA0019	
	62	Dust Shield		1	MPA2541	
<b>8993019011</b>		<b>Speed Valve kit</b>				MPA0800
	28	Valve Sleeve	<b>H</b>	1	MPA0015	
	30	Valve Stem assembly		1	MPA0008	
	31	O-Ring		1	MPA0043	
	32	Speed Control		1	MPB0014	
	33	Retaining Ring		1	MPA0039	

## ROS 325 & 350 - 77 mm Spare Part kits

Mirka Code	Item	Description	Kit	QTY	Part No
<b>8993017711</b>		<b>Rotor, Vanes and Key kit</b>			MPA0801
	6	Rotor	<b>I</b>	1	MPB0005
	7	Vane		5	MPA0010
	8	Key		1	MPA0041
<b>8993014311</b>		<b>Shaft Balancer kit 77/2,5 mm - (ROS 325)</b>			MPA2154
	13	Shaft Balancer (3 x 3/32 In) - 2,5 mm Orbit	<b>J</b>	1	MPB0084
	14	Filter		1	MPA0122
	15	Check Valve		1	MPA0121
	16	Retainer		1	MPA0120
<b>8993014321</b>		<b>Shaft Balancer kit for 77/5,0 mm - (ROS 350) (North America only)</b>			MPA2892
	64	Shaft Balancer (3 x 3/16 in) - 5,0 mm Orbit	<b>J</b>	1	MPB0309
	14	Filter		1	MPA0122
	15	Check Valve		1	MPA0121
	16	Retainer		1	MPA0120
<b>8993010911</b>		<b>Lever kit 2,5 mm Orbit</b>			MPA0984
	25	Lever for 2,5 mm Orbit (3/32)	<b>K</b>	1	MPA1698
	26	Pin		1	MPA0031
<b>8993010811</b>		<b>Lever kit 5,0 mm Orbit</b>			MPA0983
	25	Lever for 5,0 mm Orbit (3/16)	<b>K</b>	1	MPA1699
	26	Pin		1	MPA0031
<b>8993018911</b>		<b>Retainer and O-Ring kit (Standard for DB)</b>			MPA2551
	45	O-Ring	<b>L</b>	2	MPA0044
	46	Retainer - (DB)		1	MPA0006
<b>8993011311</b>		<b>Swivel Fitting DB 28 mm kit (Standard for DB)</b>			MPA0932
	47	Swivel Exhaust assembly 28 mm (1 In.) (Standard for DB)	<b>M</b>	1	MPA0410
	48	Hose Seal 28mm (1 In.)		1	MPA0778
	51	Hose Seal Tag 28mm (1 In.)		1	MPA0931
<b>8993011411</b>		<b>Swivel Fitting DB 19 mm kit (Optional for DB)</b>		OPT.	MPA0858
	49	Swivel Exhaust assembly 19 mm (¾ In.) (Optional for DB)	<b>N</b>	1	MPA0409
	50	Hose Seal 19mm (¾ In.)		1	MPA0854
	51	Hose Seal Tag 19mm (¾ In.)		1	MPA0856
<b>8993013611</b>		<b>Swivel Fitting kit CV 19 mm (Optional for CV)</b>		OPT.	MPA0987
	55	Swivel Exhaust 19 mm (¾ In.) (Optional for CV)	<b>O</b>	1	MPA0205
	57	Nut M5x0.8		1	MPA0048
	58	Washer M5		1	MPA0047
	59	Screw M5x10		1	MPA0769

Separate spare parts on next page.

## ROS 325 & 350 - 77 mm Spare Parts

Mirka Code	Item	Description	Kit	QTY	Part No
	1	Retaining Ring	G	1	MPA0040
	2	Bearing	G	1	MPA0021
<b>8993009311</b>	3	<b>Rear Endplate</b>		1	MPB0017
	4	Cylinder assembly	E	1	MPA0005
<b>8993008211</b>	5	<b>O-Ring 5 x 2 mm</b>	E	1	MPA0042
	6	Rotor	I	1	MPB0005
	7	Vane	I	5	MPA0010
	8	Key	I	1	MPA0041
<b>8993009411</b>	9	<b>Front Endplate</b>		1	MPB0016
	10	Bearing	G	1	MPA0019
	11	O-Ring 39.4 x 3.1 mm	F	1	MPA0045
	12	Lock Ring	F	1	MPA0001
	13	Shaft Balancer (3 x 3/32 In) - 2,5 mm Orbit	J	1	MPB0084
	14	Filter	J	1	MPA0122
	15	Check Valve	J	1	MPA0121
	16	Retainer	J	1	MPA0120
	17	Retaining Ring	B2	1	
	18	Bearing	B2	1	
	19	Spacer	B2	1	
	20	Bearing	B2	1	
	21	Washer	B2	1	
	22	Dual Seal	B2	1	
	23	Retaining Ring	B2	1	
	24	Spindle - Orbit 2.5 mm - (ROS 325)	B2	1	
	25	Lever for 2,5 mm Orbit (3/32)	K	1	MPA1698
	25	Lever for 5,0 mm Orbit (3/16)	K	1	MPA1699
	26	Pin	K	1	MPA0031
<b>8993013811</b>	27	<b>Grip 64 mm (2 1/2 In.) - (Optional)</b>		OPT.	MPA0288
<b>8993016011</b>	27	<b>Grip 70 mm (2 3/4 In.) - (Optional)</b>		OPT.	MPA0289
<b>8993013511</b>	27	<b>Grip 75 mm (3 In.) - (Standard)</b>		1	MPA0290
	28	Valve Sleeve	H	1	MPA0015
<b>8993006811</b>	29	<b>Housing</b>		1	MPA0227
	30	Valve Stem assembly	H	1	MPA0008
	31	O-Ring	H	1	MPA0043
	32	Speed Control	H	1	MPB0014
	33	Retaining Ring	H	1	MPA0039
<b>8993011111</b>	34	<b>Shroud 77 mm (3 In.) (NV)</b>		1	MPC0046
<b>8993012011</b>	35	<b>Shroud 77 mm (3 In.) (CV, DB) Orbit 2,5 mm</b>		1	MPC0047
<b>8993012611</b>	35	<b>Shroud 77 mm (3 In.) CV, DB) Orbit 5,0 mm - (North America only)</b>		1	MPC0243
<b>8993008012</b>	36	<b>Pad Wrench 17 mm (Supplied With Each Tool)</b>		1	MPA0146
<b>8294791211</b>	37	<b>Backing Pad 77mm 1/4" Grip 6H Medium</b>		1	
<b>8294791311</b>	37	<b>Backing Pad 77mm 1/4" Grip Medium</b>		1	
	38	Internal Muffler	A	1	MPA0062
	39	Muffler Insert	A	1	MPA0068
	40	Muffler Housing	A	1	MPA0166
	41	Valve Seat	C	1	MPA0009
	42	Valve	C	1	MPA0007
	43	Valve Spring	C	1	MPA0014
	44	Inlet Bushing assembly (1/4-18 Npt)	C	1	MPA0013

## ROS 325 & 350 - 77 mm Spare Parts

Mirka Code	Item	Description	Kit	QTY	Part No
	45	O-Ring	L	2	MPA0044
	46	Retainer - (DB)	L	1	MPA0006
	47	Swivel Exhaust assembly 28 mm (1 In.) (Standard for DB)	M	1	MPA0410
	48	Hose Seal 28mm (1 In.)	M	1	MPA0778
	49	Swivel Exhaust assembly 19 mm (¾ In.) (Optional for DB)	N	OPT.	MPA0409
	50	Hose Seal 19mm (¾ In.)	N	1	MPA0854
	51	Hose Seal Tag 19mm (¾ In.)	N	OPT.	MPA0856
	51	Hose Seal Tag 28mm (1 In.)	M	1	MPA0931
<b>8993306711</b>	<b>52</b>	<b>Hose Ø 19 mm (¾ In.) X Ø 28 mm (1 In.) Hose Adapter &amp; Air Line (Opt. for CV)</b> Includes: MPA0200 Ø 19 mm (¾ In.) x 1,5 m (5 Ft.) Vacuum Hose, MPB0088 19 mm (¾ In.) Hose x 28 mm (1 In.) Hose Adapter, MPA0302 Ø 6.3 mm (¼ In.) x 1,5 m (5 Ft.) Airline with Fittings, MPA0301 Bungee for Ø 6.3 mm (¼ In.) Airline & Ø 19 mm (¾ In.) Vacuum Hose (5)		OPT.	MPA0300
8993039211	52	Hose Ø 28 mm (1 In.) X Ø 38 mm (1½ In.) Friction Fit Adapter & Air Line (Opt. for CV) Includes: MPA0034 Ø 28 mm (1 In.) x 1,8 m (6 Ft.) Vacuum Hose, MPB0092 Ø 28 mm (1 In) Hose Thread X Ø 38 mm (1 ½ In) Friction Fit Adapter, MPA0033 Ø 6.3 mm (¼ In.) X 1,8 m (6 Ft.) Airline with Fittings, MPA0027 Bungee for Ø 6.3 mm (¼ In.) Air Line & Ø 28 mm (1 In.) Vacuum Hose (5)		OPT.	MPA0392
8993041111	53	Hose Ø 19 mm (¾ In.), Double Bag Fitting and Air Line (Optional for DB) Includes: MPA0200 Ø 19 mm (¾ In.) X 1.5 M (5 Ft) Vacuum Hose, MPB0133 Ø 19 mm (¾ In) Hose to Double Bag Vacuum Fitting, MPA0302 Ø 6.3 mm (¼ In.) X 1.5 M (5 Ft) Airline with Fittings, MPA0301 Bungee for Ø 6.3 mm (¼ In.) Airline & Ø 19 mm (¾ In.) Vacuum Hose (5)		OPT.	MPA0411
<b>8993006711</b>	<b>53</b>	<b>Hose Ø 28 mm (1 in.), Double Bag Fitting &amp; Air Line (Standard for DB)</b> Includes: MPA0034 Ø 28 mm (1 In.) x 1,8 m (6 Ft) Vacuum Hose, MPB0123 Ø 28 mm (1 In) Hose to Double Bag Vacuum Fitting, MPA0033 Ø 6.3 mm (¼ In.) X 1,8 m (6 Ft) Airline with Fittings, MPA0027 Bungee for Ø 6.3 mm (¼ In.) Airline & Ø 28 mm (1 In.) Vacuum Hose (5)		1	MPA0412
<b>8993011511</b>	<b>54</b>	<b>Exhaust Adapter - (Standard for DB)</b>		1	MPC0108
	55	Swivel Exhaust 19 mm (¾ In.) (Optional for CV)	O	OPT.	MPA0205
	56	Swivel Exhaust 28 mm (1 In.) (Standard for CV)	D	1	MPA0099
	57	Nut M5x0.8	D,O	1	MPA0048
	58	Washer M5	D,O	1	MPA0047
	59	Screw M5 x 10	D,O	1	MPA0769
	62	Dust Shield	G	1	MPA2541
	64	Shaft Balancer (3 x 3/16 in) - 5,0 mm Orbit	J	1	MPB0309
	65	Retaining Ring	B1	1	
	66	Bearing	B1	1	
	67	Belleville Washer	B1	1	
	68	Spindle - Orbit 5.0 mm - (ROS 350)	B1	1	
	69	Retaining Ring	B1	1	